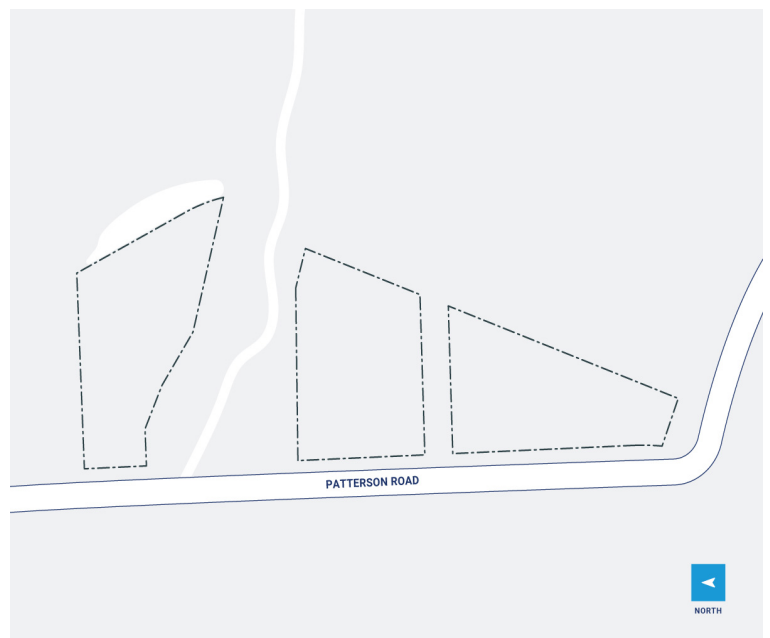
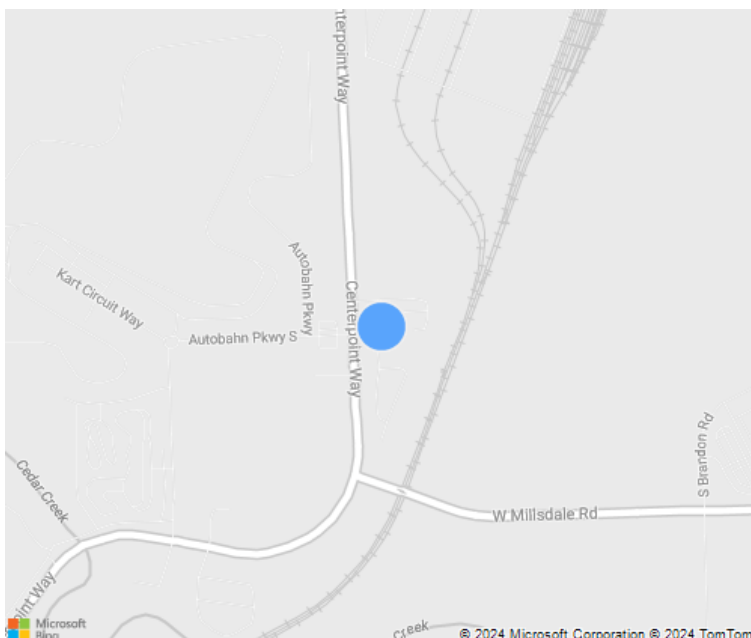


12 Acres

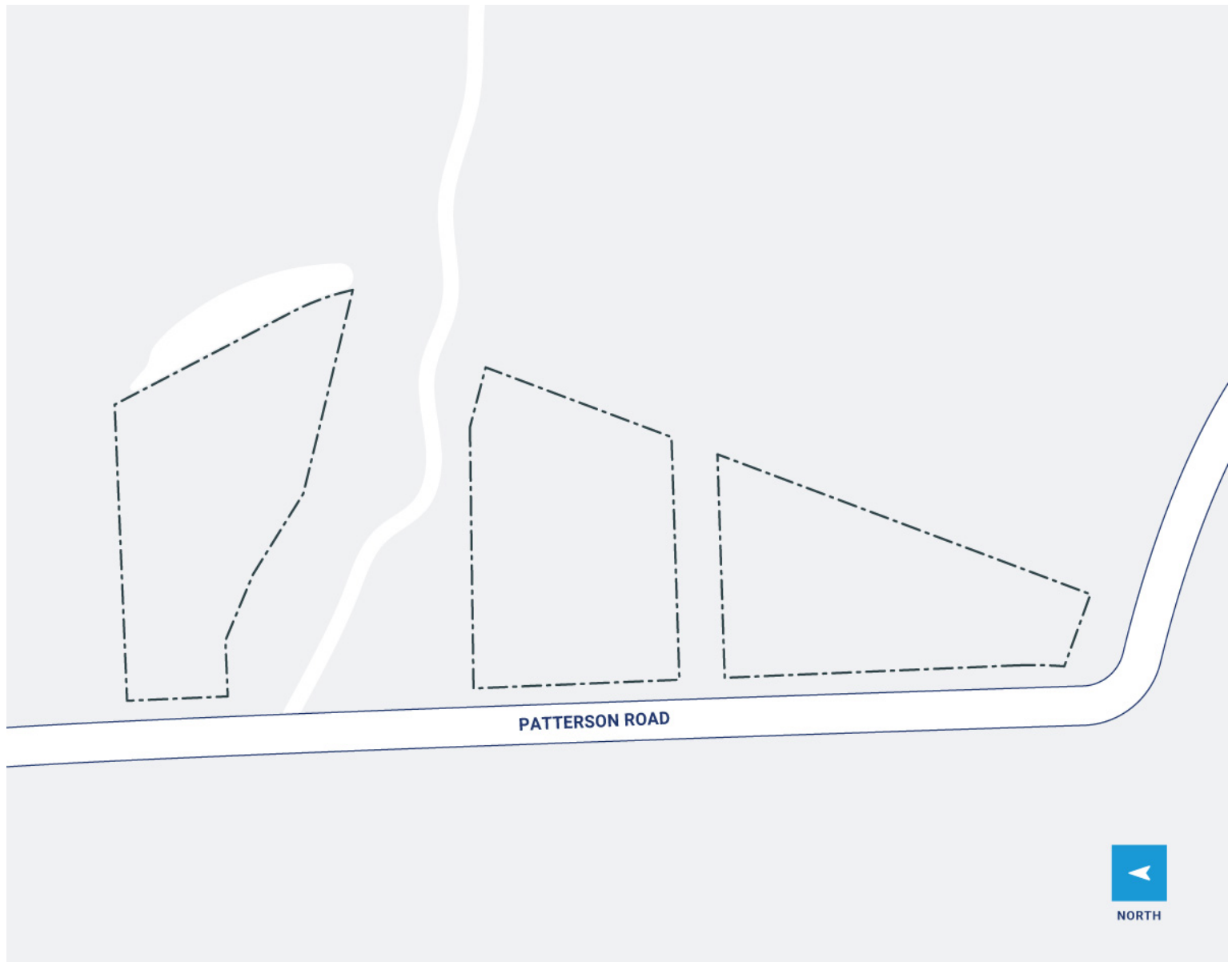


CenterPoint Properties

3750 CenterPoint Way, Joliet, IL



CenterPoint Properties



Property Description

Market: Chicago

Land: 12 Acres

Building: 13,888 SF

Office: 0 SF

Available: SF

Year Built: 2010

Rail Access: No

Renovated:

Car Parking: 11 spaces

Trailer Parking: 256 spaces

Clear Height: 0'

Exterior Docks: 0

Interior Docks: 0

Drive-In Doors: 0

Construction: N/A

Roof: N/A

HVAC: Gas Heat, No HVAC

Sprinkler: N/A

Power: NA

Typical Bay Size: 0' x 0'

Available Units: 0