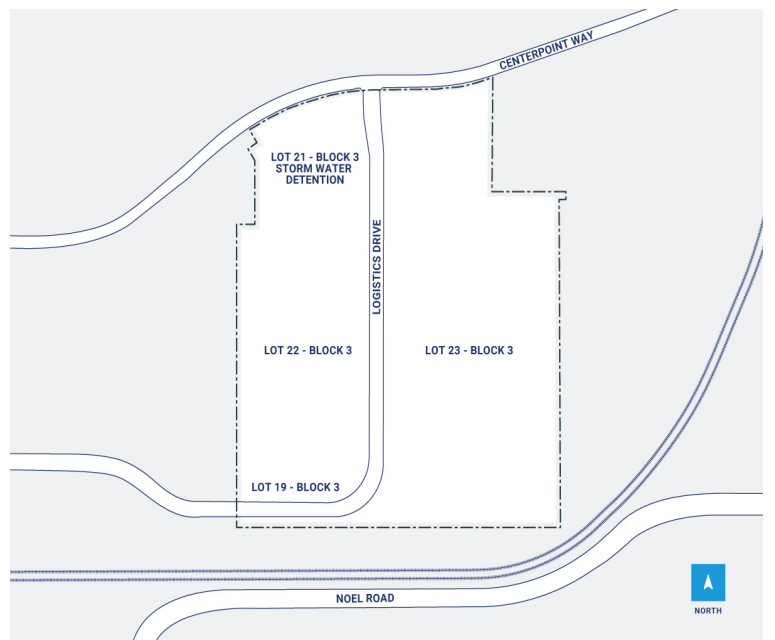
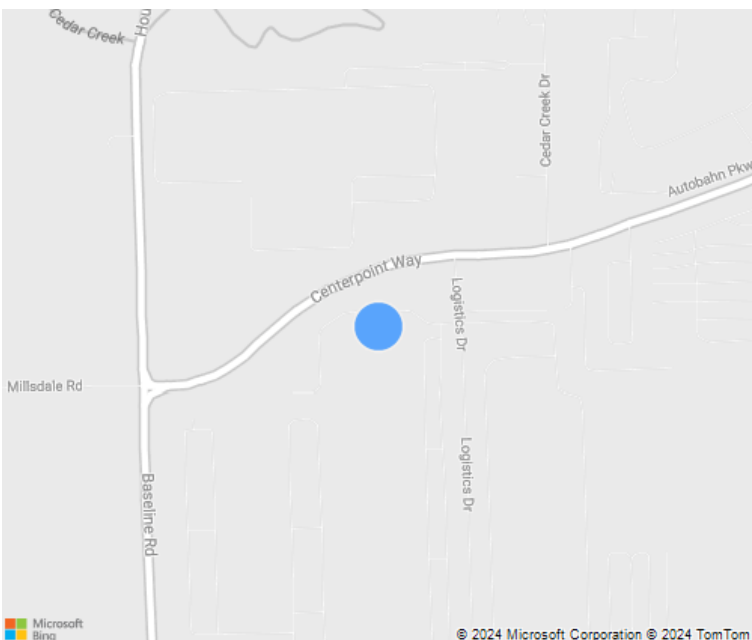


88 Acres

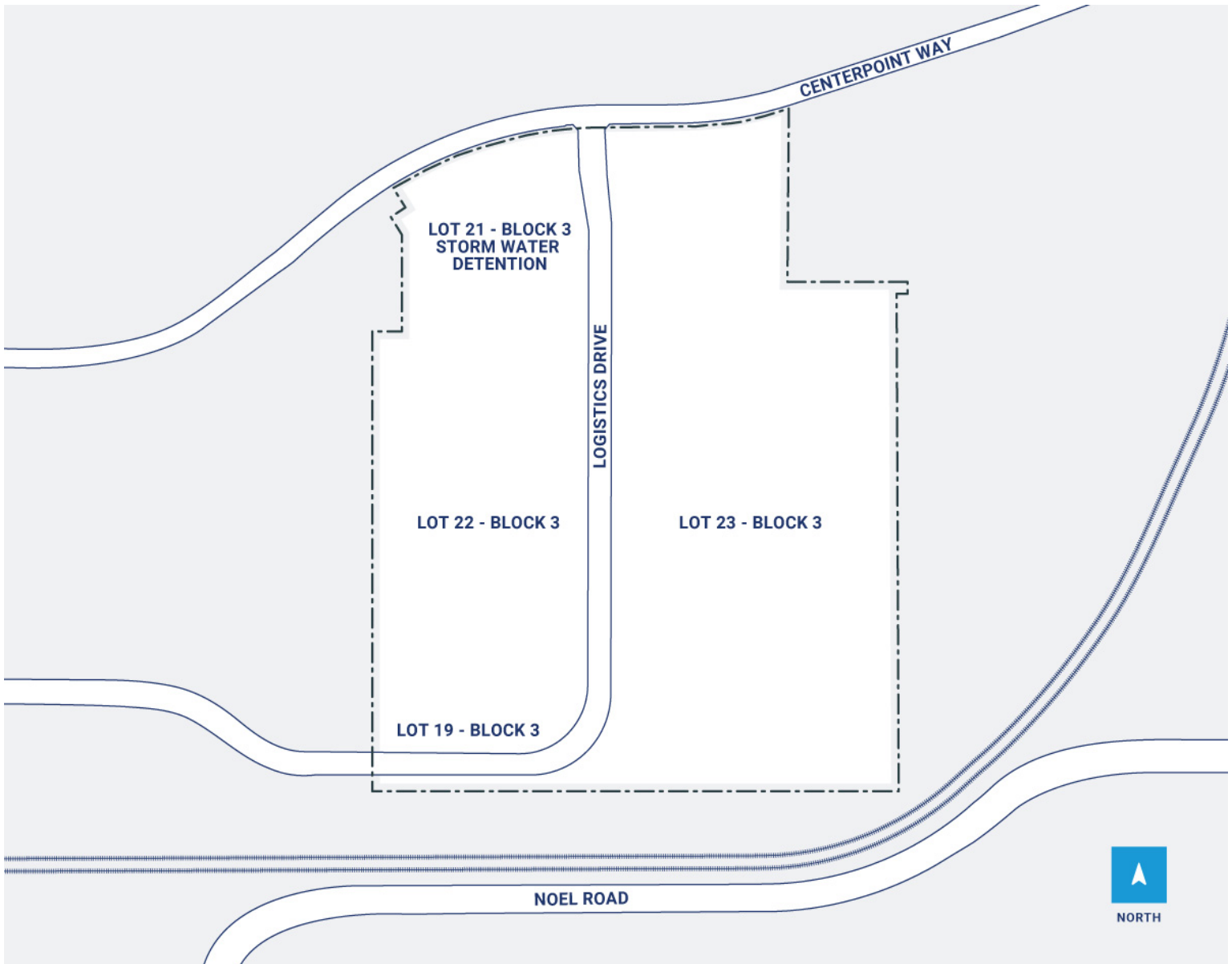


CenterPoint Properties

2551 Logistics Drive, Joliet, IL



CenterPoint Properties



Property Description

Market: Chicago

Land: 88 Acres

Building: 1,618,048 SF

Office: 12,714 SF

Available: SF

Year Built: 2013

Rail Access: No

Renovated:

Car Parking: 152 spaces

Trailer Parking: 630 spaces

Clear Height: 36'

Exterior Docks: 184

Interior Docks: 0

Drive-In Doors: 1

Construction: Precast

Roof: Mechanically attached 60 mil TPO

HVAC: Gas Heat

Sprinkler: ESFR

Power: 5,600 Amp

Typical Bay Size: 0' x 0'

Available Units: 0