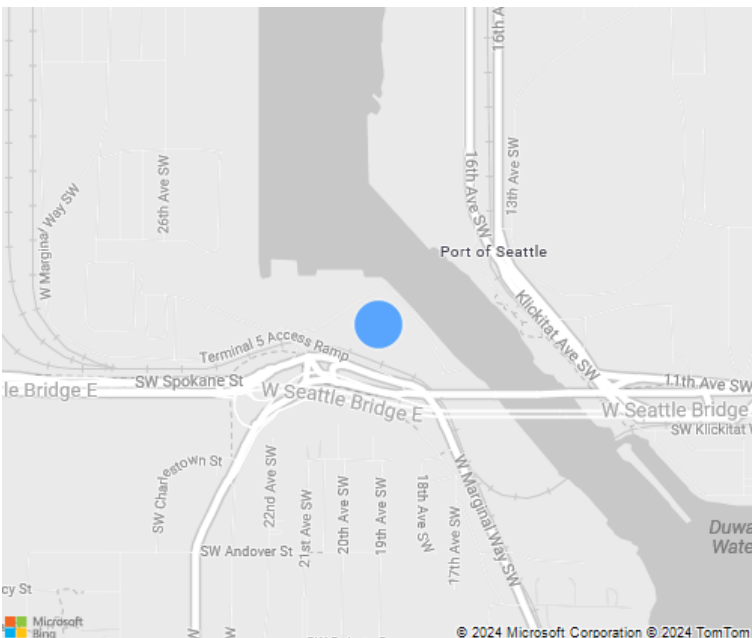
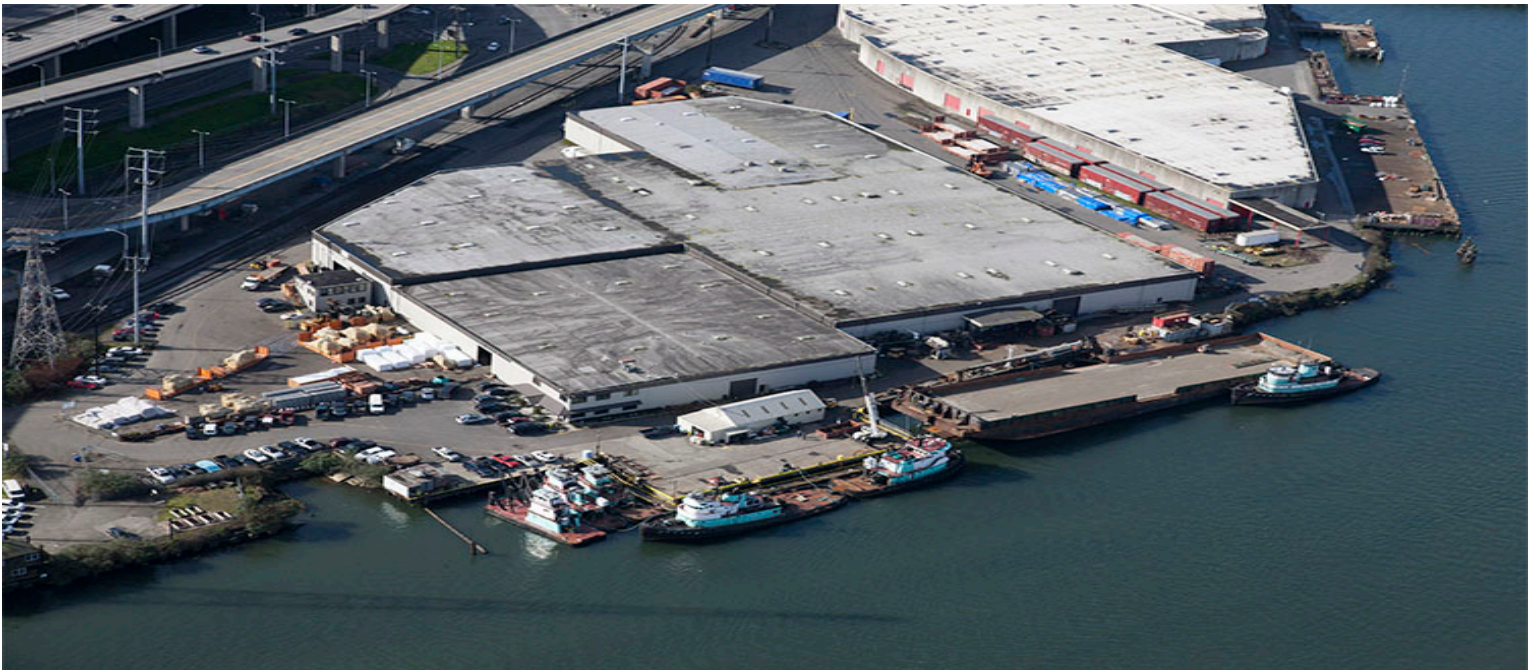


5 Acres



CenterPoint Properties

3518, 3546 W Marginal Way, Seattle, WA



NORTH

CenterPoint Properties



Property Description

Market: Seattle

Land: 5 Acres

Building: 170,632 SF

Office: 76,796 SF

Available: SF

Year Built: 1966

Rail Access: Yes

Renovated: 1975

Car Parking: 28 spaces

Trailer Parking: 0 spaces

Clear Height: 20'

Exterior Docks: 33

Interior Docks: 0

Drive-In Doors: 30

Construction: Concrete panel, steel columns, wood columns, laminated

Roof: Modified Bitumen membrane on wood deck and framing, could

HVAC: AC, Electric Heat

Sprinkler: Dry System

Power: 1,000-amperes, 277/480, 3-phase, 4-wire

Typical Bay Size: 0' x 0'

Available Units: 0