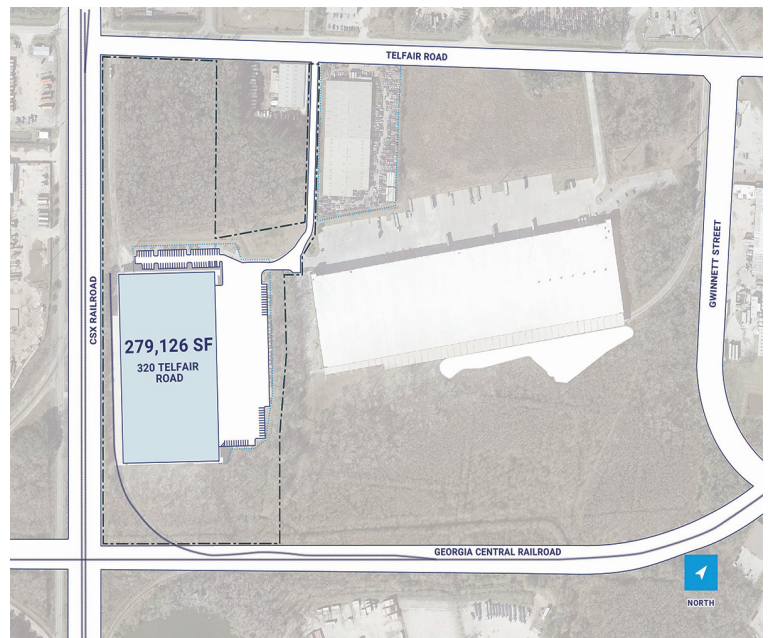
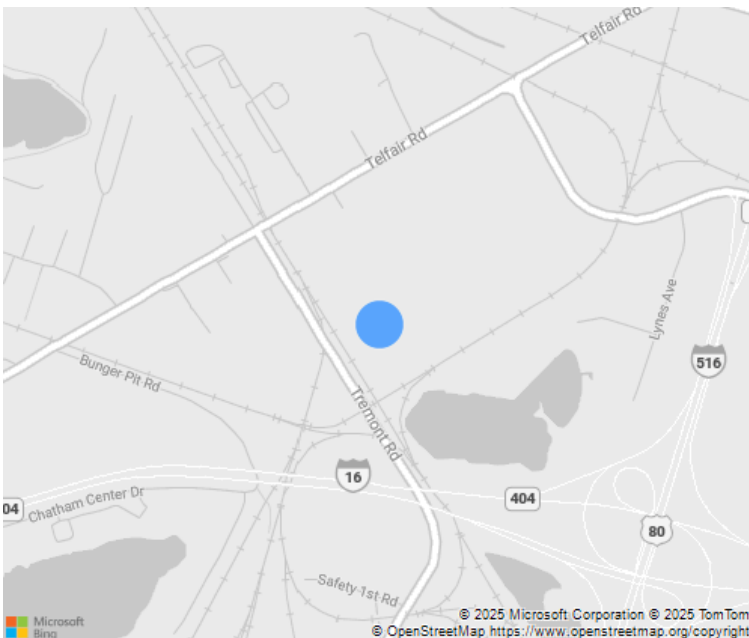


10 Acres



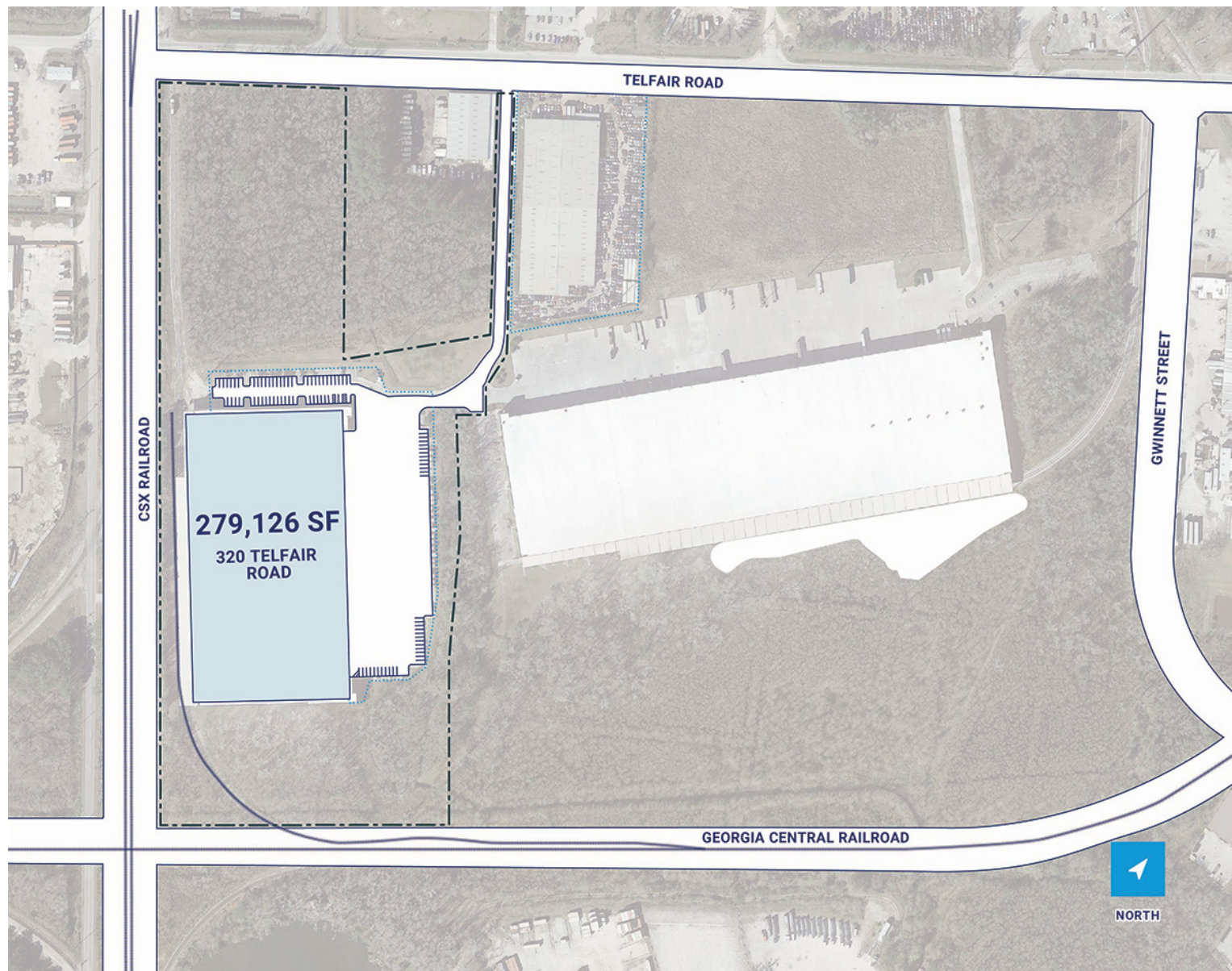
# CenterPoint Properties

320 Telfair Road, Savannah, GA





# CenterPoint Properties



## Property Description

**Market:** Savannah

**Land:** 10 Acres

**Building:** 279,126 SF

**Office:** 3,000 SF

**Available:** SF

**Year Built:** 2007

**Rail Access:** Yes

**Renovated:**

**Car Parking:** 73 spaces

**Trailer Parking:** 84 spaces

**Clear Height:** 32'

**Exterior Docks:** 38

**Interior Docks:** 0

**Drive-In Doors:** 0

**Construction:** Concrete tilt walls, sloped metalroof

**Roof:** Sloped metal deck with foam insulation and 60 mill thermoplast

**HVAC:** AC, Electric Heat

**Sprinkler:** ESFR

**Power:** 277/480 volts, three phase, 400 ampere

**Typical Bay Size:** 52' x 60'

**Available Units:** 0