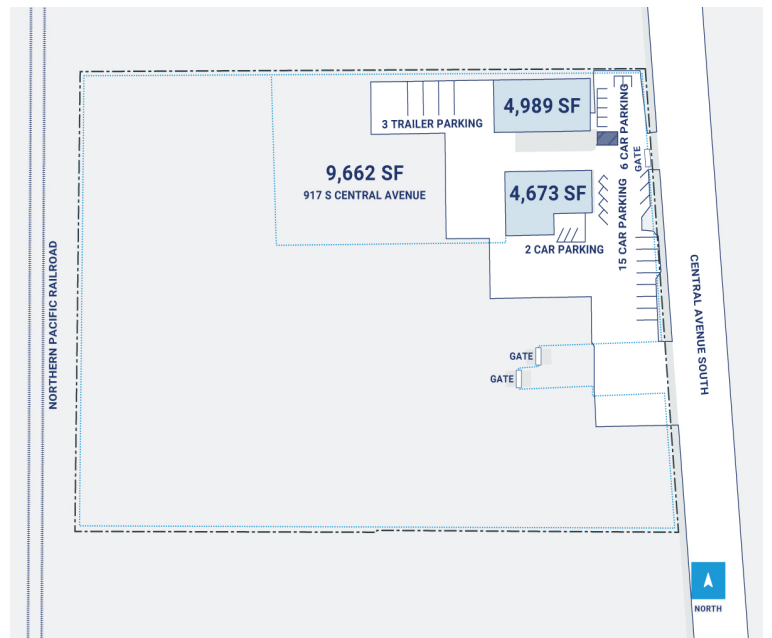
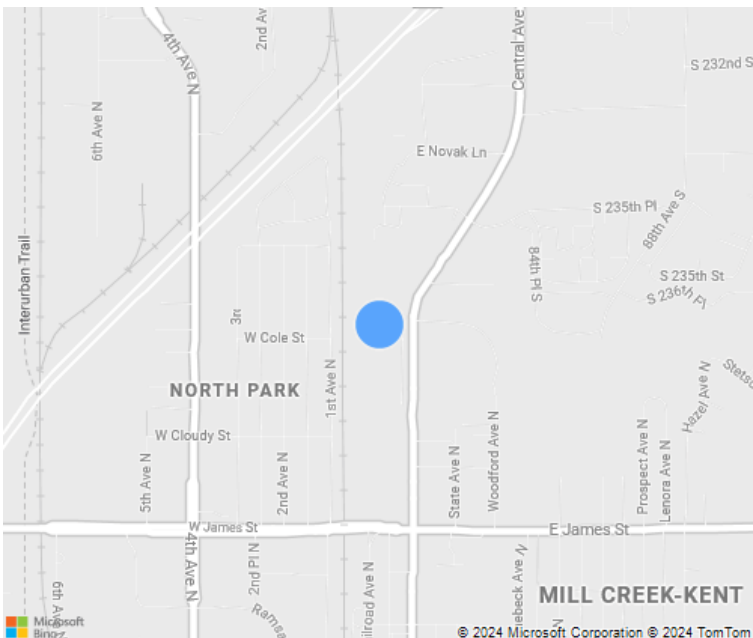


6 Acres

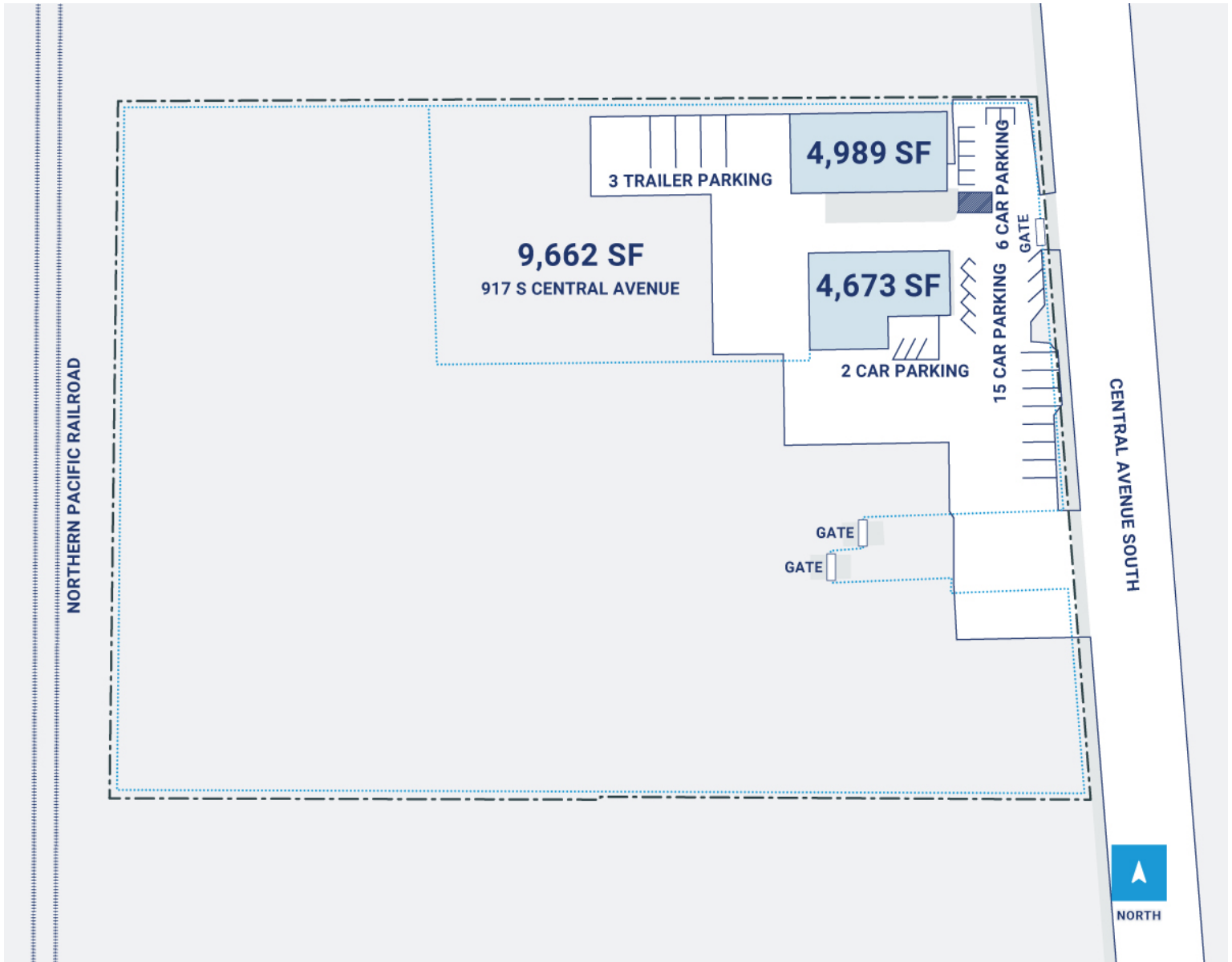


CenterPoint Properties

917 Central Ave., Kent, WA



CenterPoint Properties



Property Description

Market: Seattle

Land: 6 Acres

Building: 9,662 SF

Office: 0 SF

Available: SF

Year Built: 2001

Rail Access: No

Renovated:

Car Parking: 24 spaces

Trailer Parking: 0 spaces

Clear Height: 14'

Exterior Docks: 0

Interior Docks: 0

Drive-In Doors: 0

Construction: Steel-framed, metal clad structures with pre-engineered

Roof: Corrugated Metal Roof Panels

HVAC: Gas Heat w/ AC

Sprinkler: None

Power: 200-amp service at 208-volts, with a 3 phase 4 wire, metered

Typical Bay Size: 0' x 0'

Available Units: 0