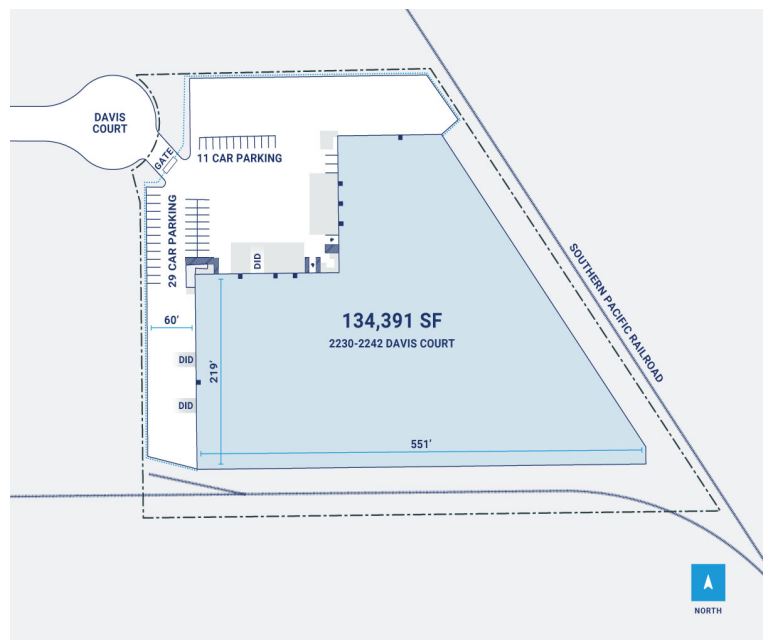
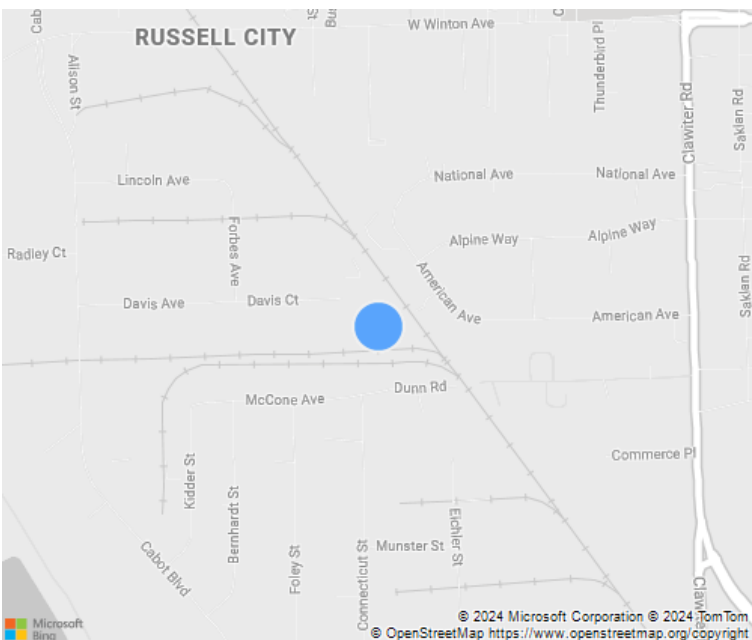


6 Acres

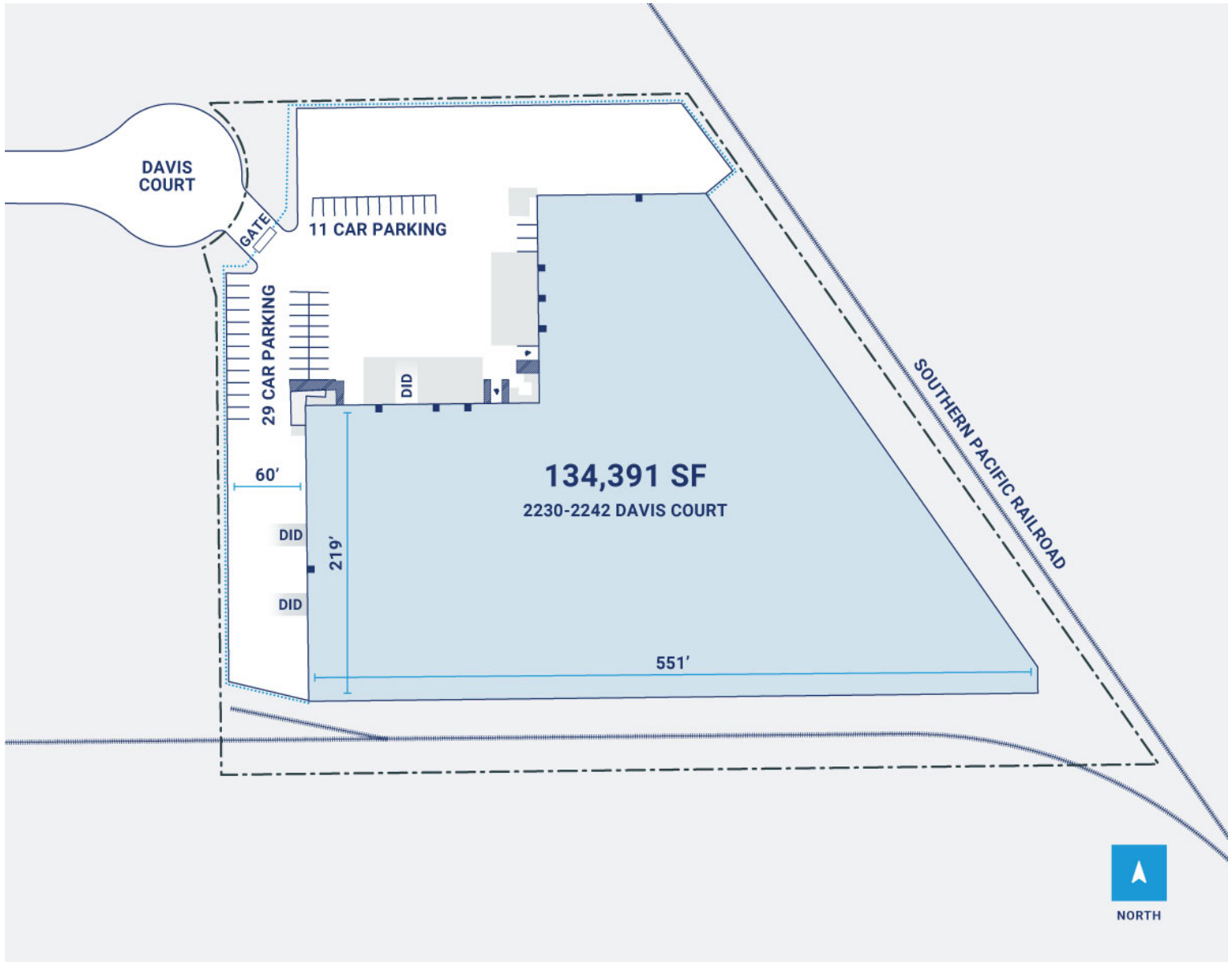


CenterPoint Properties

2230-2242 Davis Court, Hayward, CA



CenterPoint Properties



Property Description

Market: Oakland

Land: 6 Acres

Building: 134,391 SF

Office: 18,000 SF

Available: SF

Year Built: 1971

Rail Access: No

Renovated:

Car Parking: 50 spaces

Trailer Parking: 0 spaces

Clear Height: 24'

Exterior Docks: 10

Interior Docks: 0

Drive-In Doors: 5

Construction: Concrete tilt panels.

Roof: 4-ply built-up roof (BUR) membrane with granules embedded in

HVAC: AC, Gas Heat

Sprinkler: ESFR

Power: Solar Power/2,000-amp, 480-volt, 3-phase

Typical Bay Size: 22' x 73'

Available Units: 0