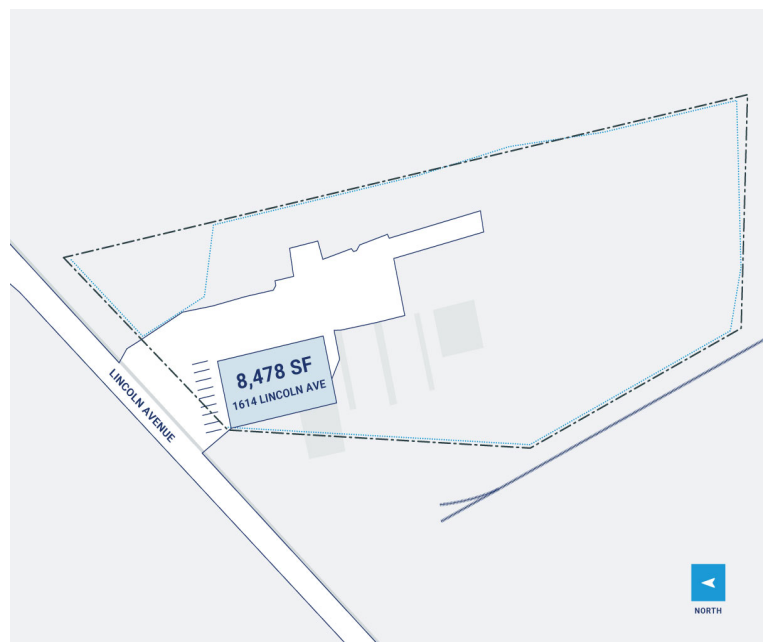


4 Acres

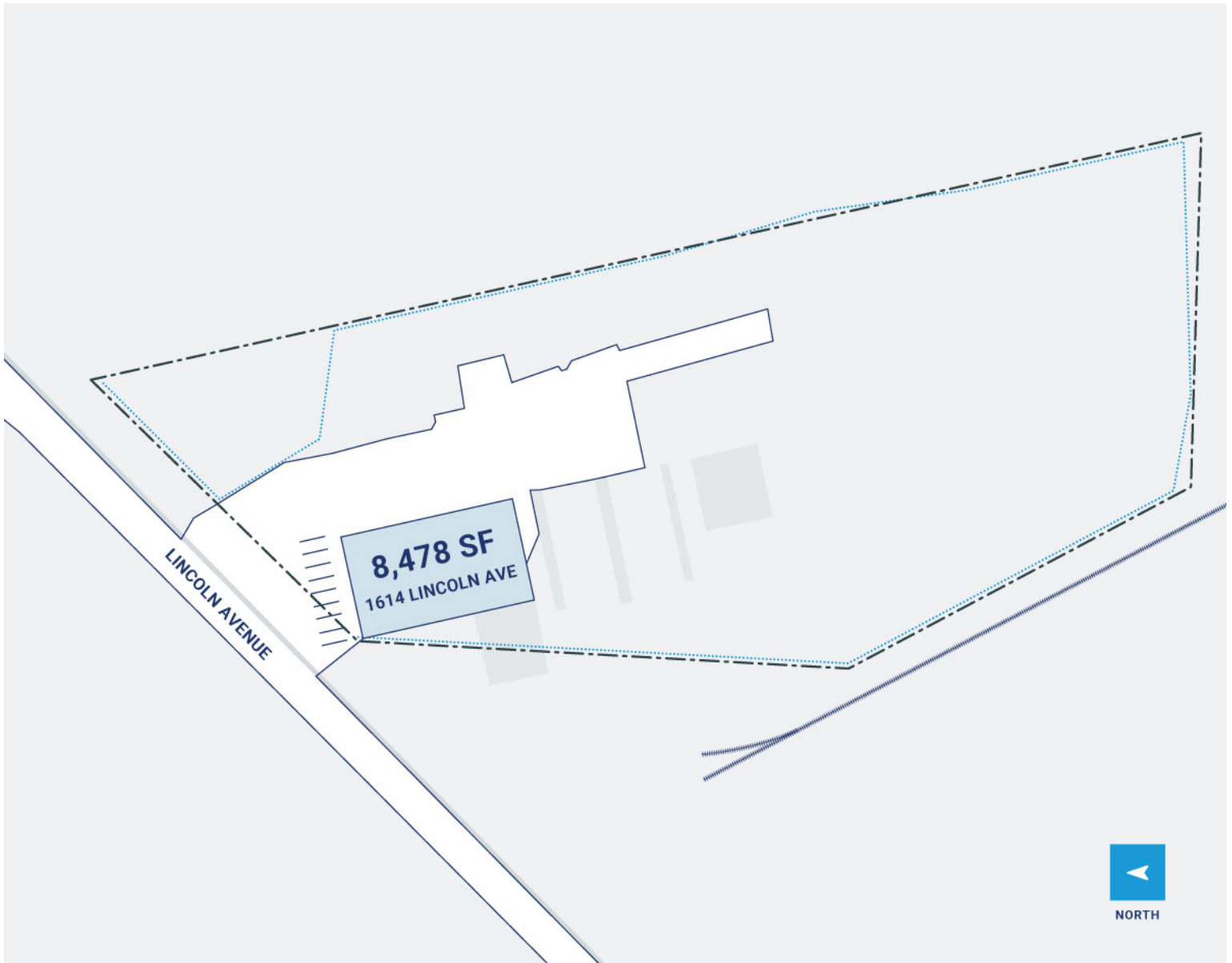


# CenterPoint Properties

1614 Lincoln Avenue, Tacoma, WA



# CenterPoint Properties



## Property Description

**Market:** Seattle

**Land:** 4 Acres

**Building:** 8,478 SF

**Office:** 3,000 SF

**Available:** SF

**Year Built:** 1962

**Rail Access:** No

**Renovated:**

**Car Parking:** 9 spaces

**Trailer Parking:** 134 spaces

**Clear Height:** 19'

**Exterior Docks:** 0

**Interior Docks:** 0

**Drive-In Doors:** 2

**Construction:** Corrugated metal panel

**Roof:** Metal Panel

**HVAC:** Gas Heat w/ AC

**Sprinkler:** N/A

**Power:** 480/277-volt, stepped down to 208/120-volt, three phase

**Typical Bay Size:** 0' x 0'

**Available Units:** 0