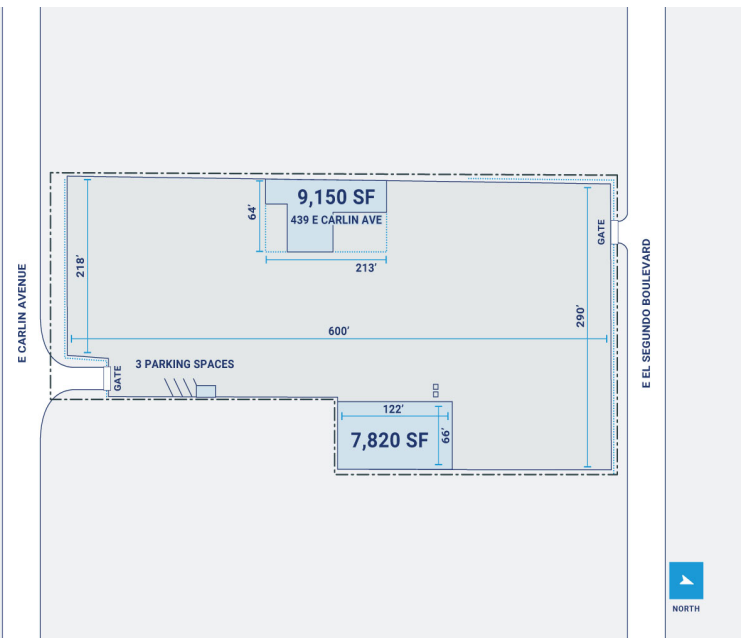
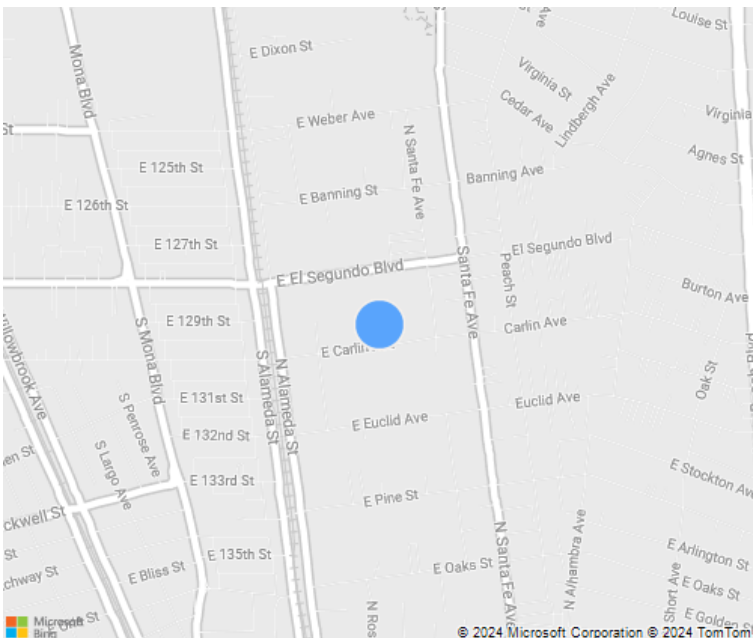


4 Acres

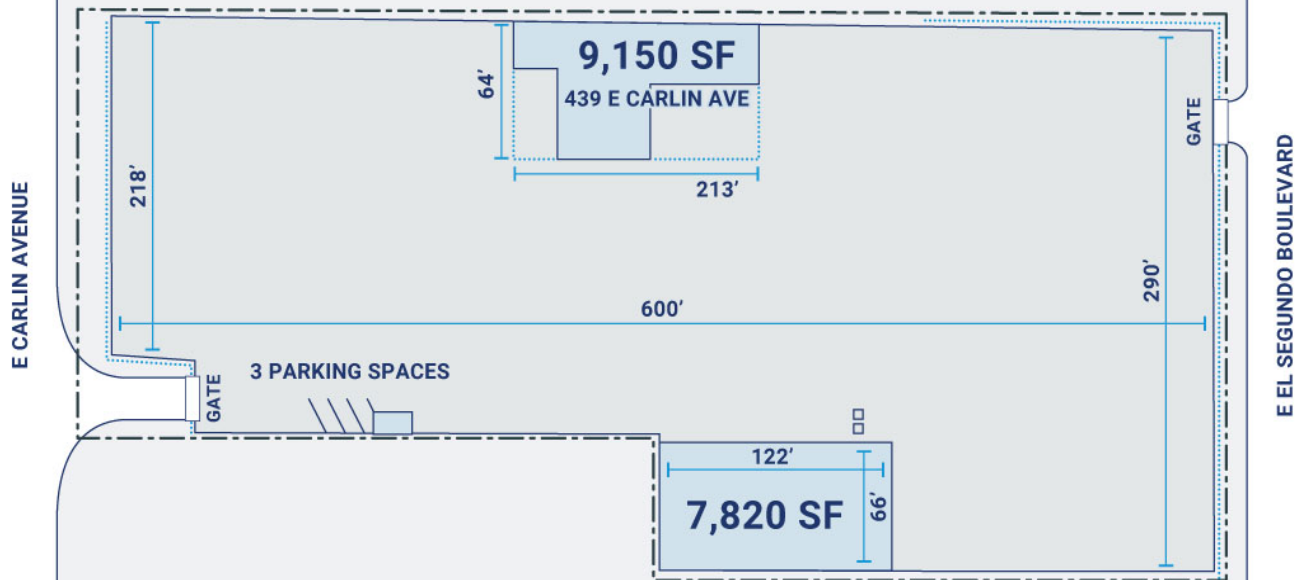


CenterPoint Properties

439 E Carlin Avenue, Compton, CA



CenterPoint Properties



Property Description

Market: Los Angeles

Land: 4 Acres

Building: 7,820 SF

Office: 7,820 SF

Available: SF

Year Built: 1925

Rail Access: No

Renovated: 1974

Car Parking: 16 spaces

Trailer Parking: 0 spaces

Clear Height: 16'

Exterior Docks: 1

Interior Docks: 5

Drive-In Doors: 4

Construction: Cement plaster / metal panels / concrete masonry units

Roof: Asphalt shingles, built-up roofing, and metal panels

HVAC: Gas Heat, Gas Heat w/ AC

Sprinkler: Wet System

Power: Cell tower

Typical Bay Size: 10' x 40'

Available Units: 0