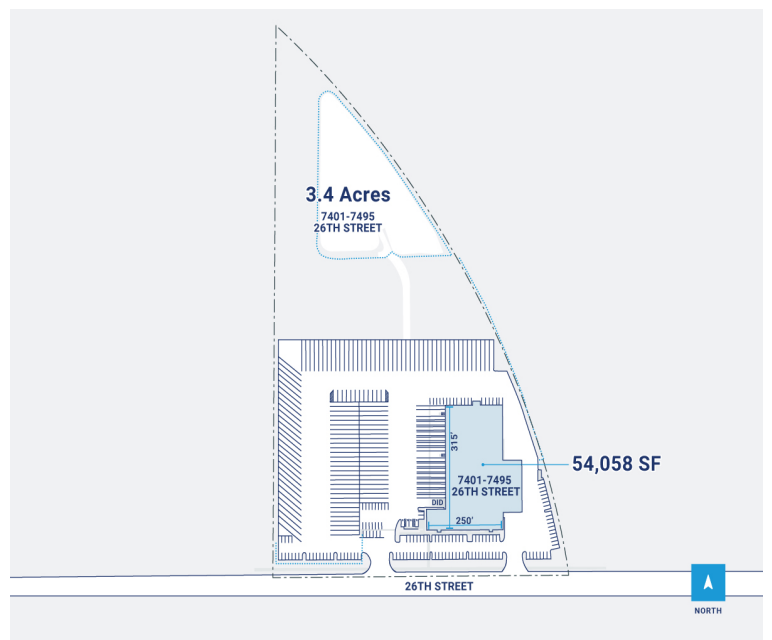
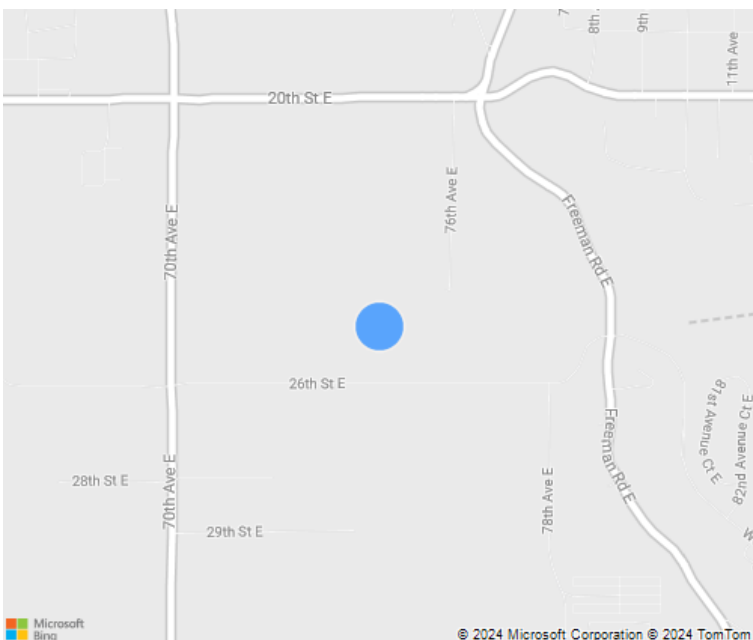


9 Acres



# CenterPoint Properties

7401-7495 26th Street East, Fife, WA



# CenterPoint Properties

**3.4 Acres**

7401-7495  
26TH STREET

**54,058 SF**

26TH STREET

NORTH

## Property Description

**Market:** Seattle

**Land:** 9 Acres

**Building:** 54,058 SF

**Office:** 0 SF

**Available:** SF

**Year Built:** 2017

**Rail Access:** No

**Renovated:**

**Car Parking:** 137 spaces

**Trailer Parking:** 126 spaces

**Clear Height:** 30'

**Exterior Docks:** 32

**Interior Docks:** 0

**Drive-In Doors:** 14

**Construction:** Tilt up concrete

**Roof:** TPO

**HVAC:** Gas Heat w/ AC

**Sprinkler:** Wet system

**Power:** 480/277-volts, 3-phase

**Typical Bay Size:** 50' x 50'

**Available Units:** 0