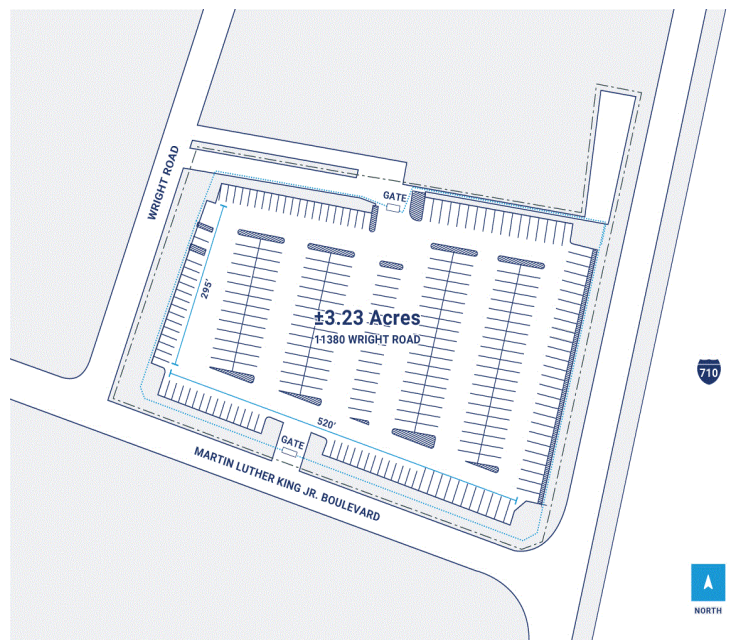
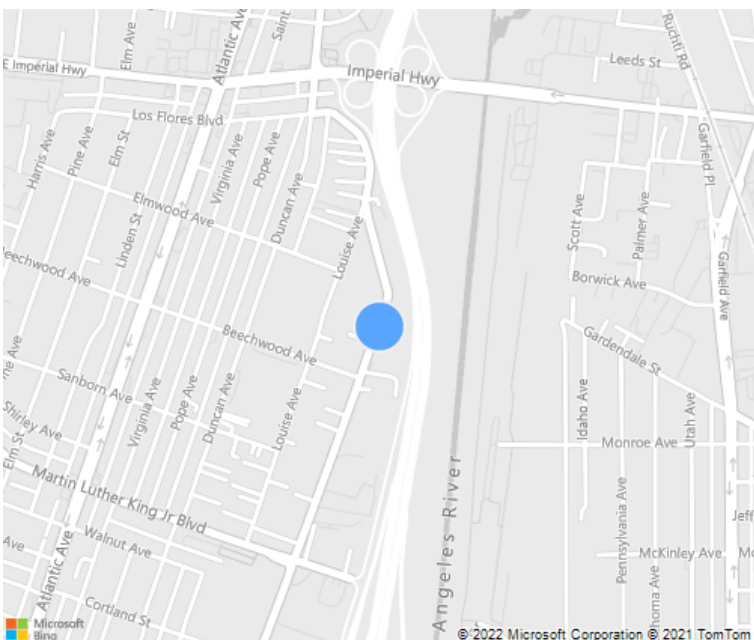


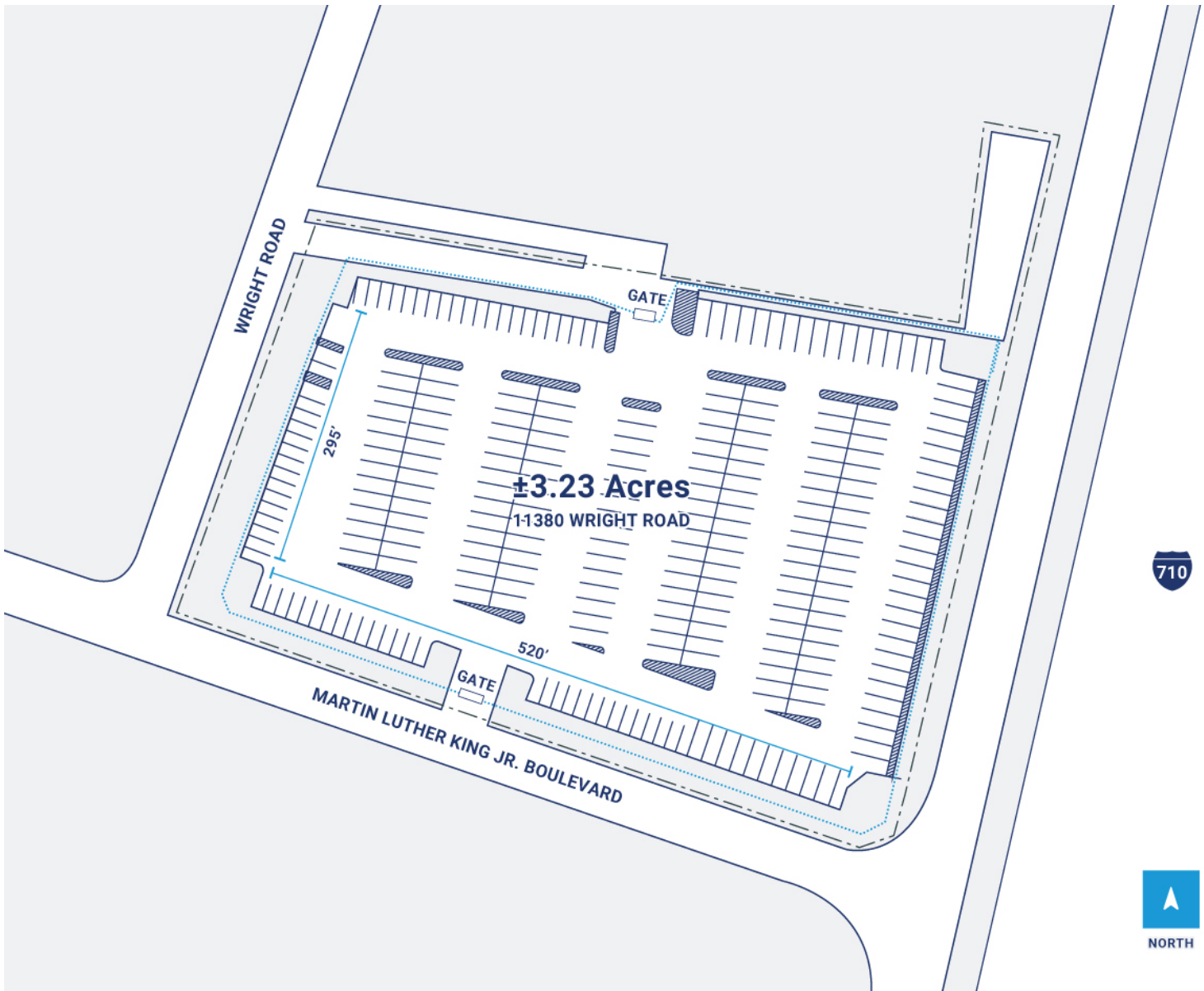
4 Acres



# CenterPoint Properties

11380 Wright Road , Lynwood, CA





## Property Description

**Market:** Los Angeles

**Land:** 4 Acres

**Building:** 0 SF

**Office:** 0 SF

**Available:** SF

**Year Built:** 2020

**Rail Access:** No

**Renovated:**

**Car Parking:** 276 spaces

**Trailer Parking:** 0 spaces

**Clear Height:** 0'

**Exterior Docks:** 0

**Interior Docks:** 0

**Drive-In Doors:** 0

**Construction:**

**Roof:**

**HVAC:** No HVAC

**Sprinkler:**

**Power:** 200 amps, 208/120 volts, 3-phase, 4 wire

**Typical Bay Size:** 0' x 0'

**Available Units:** 0