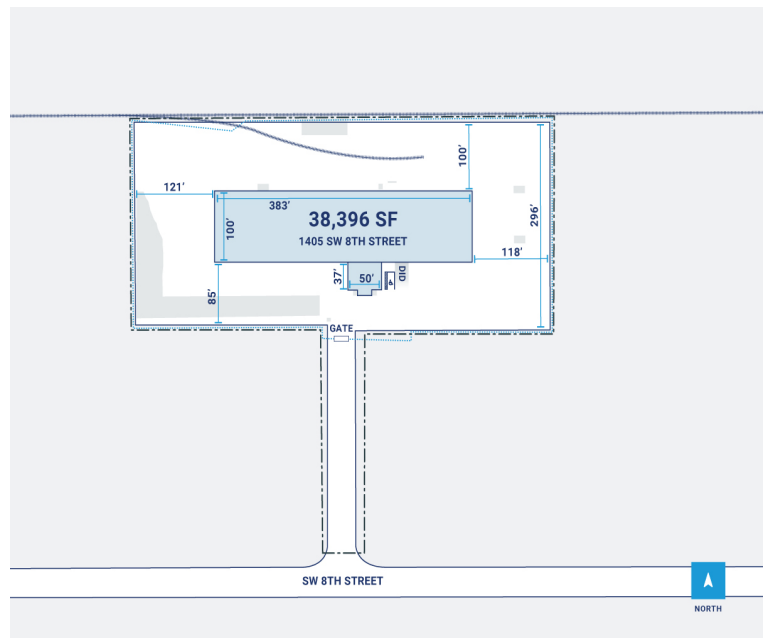
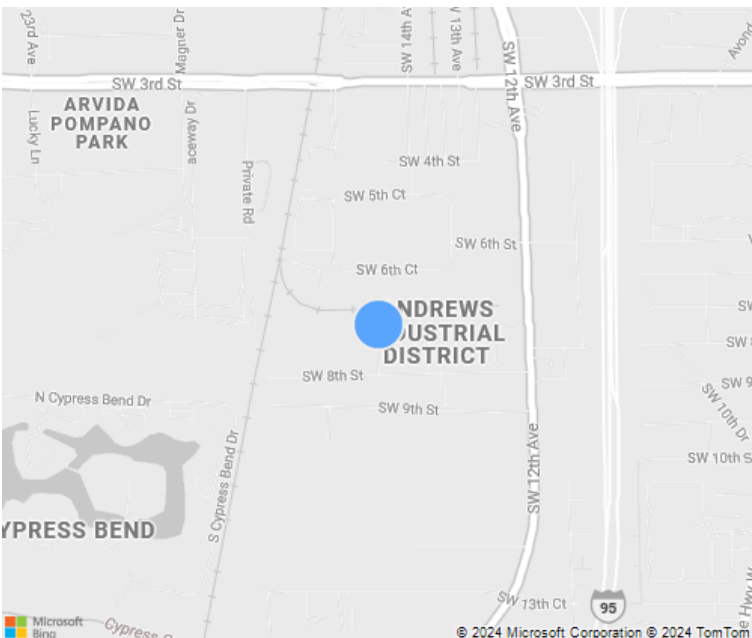


5 Acres

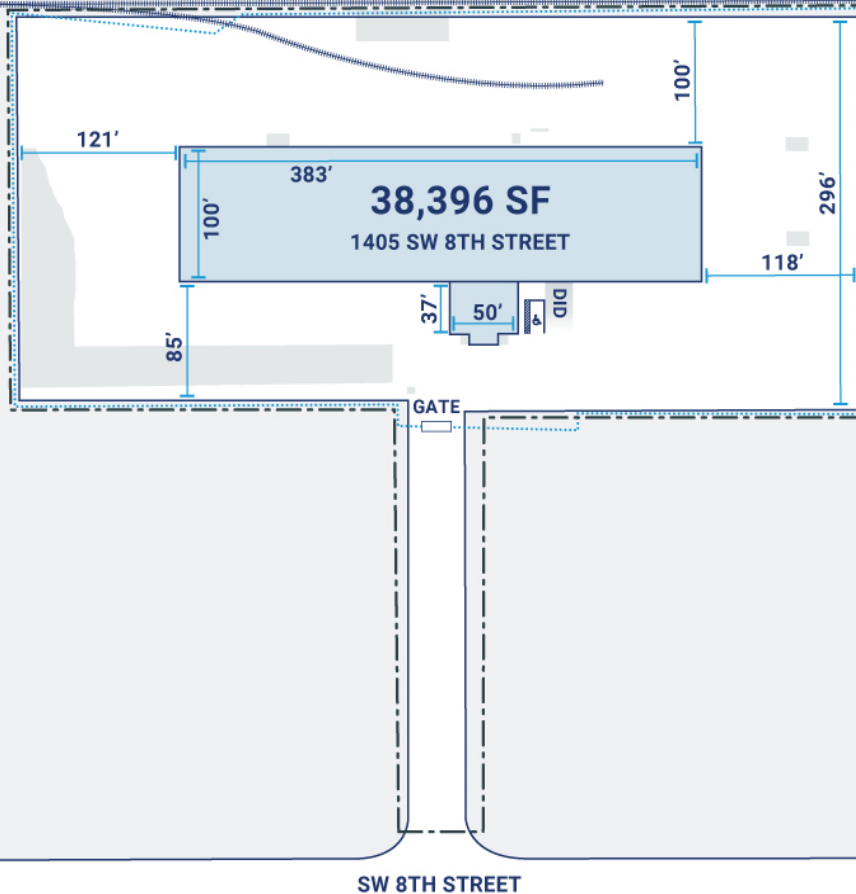


CenterPoint Properties

1405 SW 8th Street, Pompano Beach, FL



CenterPoint Properties



NORTH

Property Description

Market: South Florida

Land: 5 Acres

Building: 40,428 SF

Office: 0 SF

Available: SF

Year Built: 1969

Rail Access: Yes

Renovated: 2008

Car Parking: 1 spaces

Trailer Parking: 0 spaces

Clear Height: 20'

Exterior Docks: 1

Interior Docks: 0

Drive-In Doors: 4

Construction: Metal panels and stucco

Roof: White TPO membrane

HVAC: Electric Heat

Sprinkler: Wet

Power: 500

Typical Bay Size: 0' x 0'

Available Units: 0