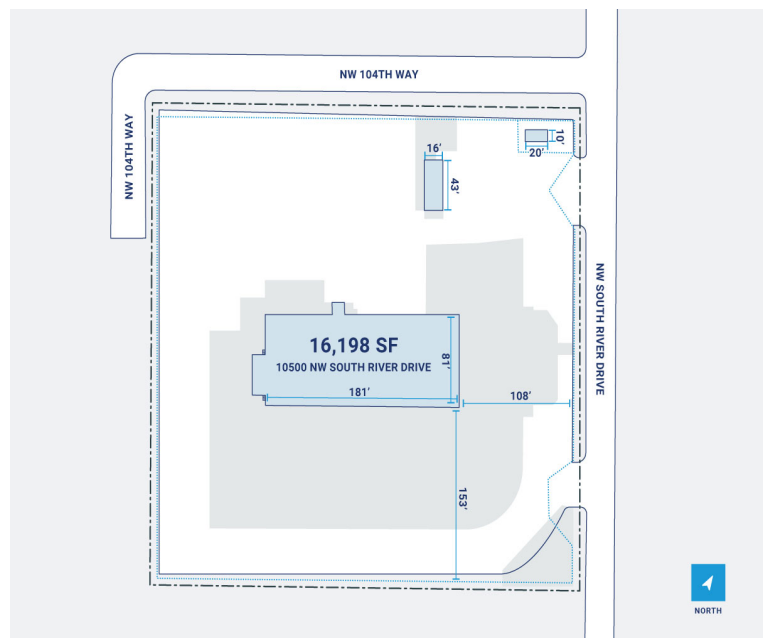
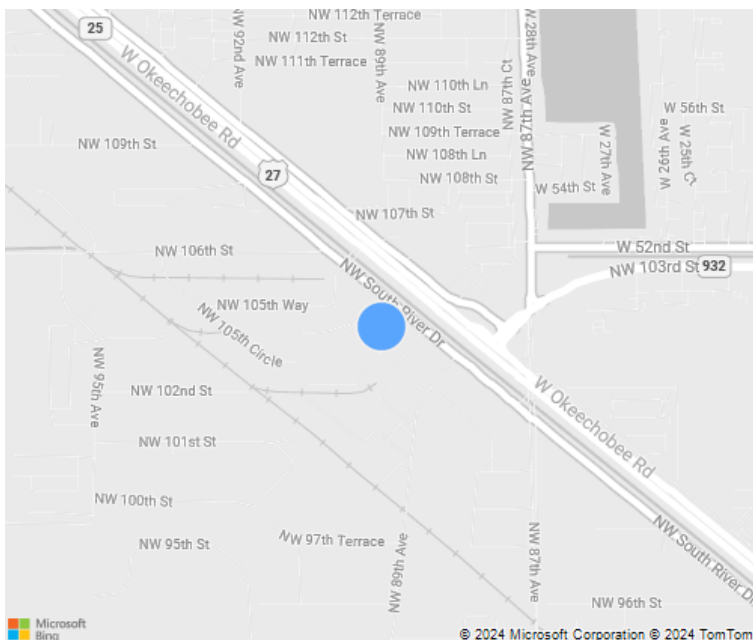


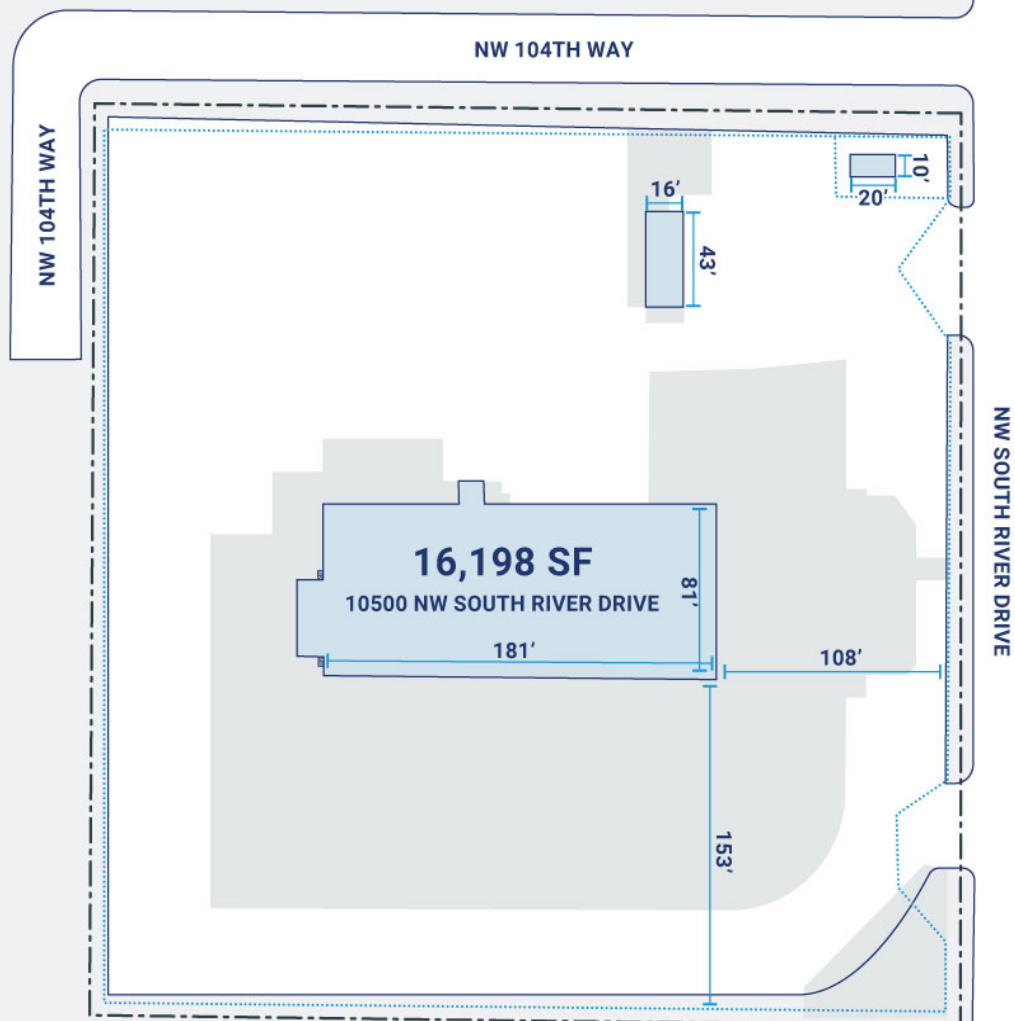


CenterPoint

10400 NW South River Drive, Medley , FL



CenterPoint Properties



Property Description

Market: South Florida

Land: 4 Acres

Building: 16,836 SF

Office: 0 SF

Available: SF

Year Built: 1965

Rail Access: No

Renovated:

Car Parking: 24 spaces

Trailer Parking: 19 spaces

Clear Height: 16'

Exterior Docks: 0

Interior Docks: 0

Drive-In Doors: 15

Construction: Painted concrete masonry unit

Roof: Smooth-surface built-up roofing with aluminum coating

HVAC: Electric Heat, No HVAC

Sprinkler: N/A

Power: 480 volts

Typical Bay Size: 0' x 0'

Available Units: 0