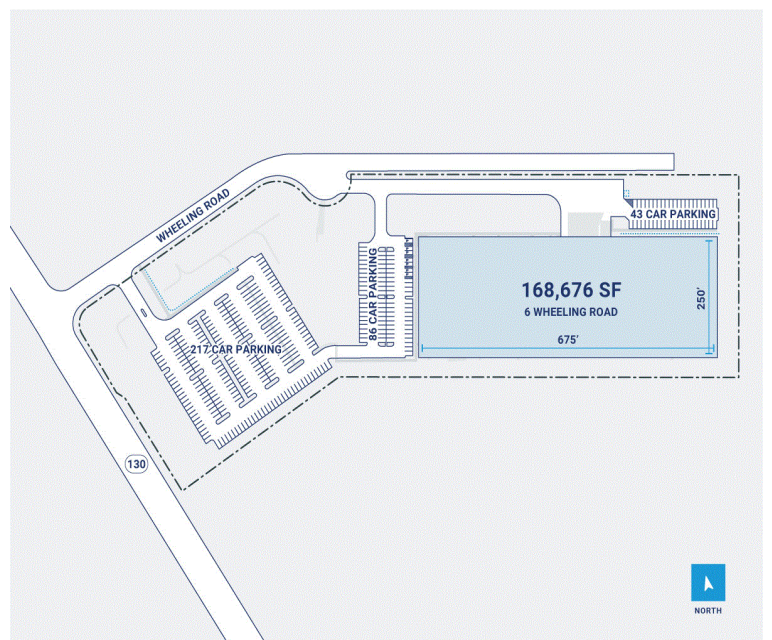
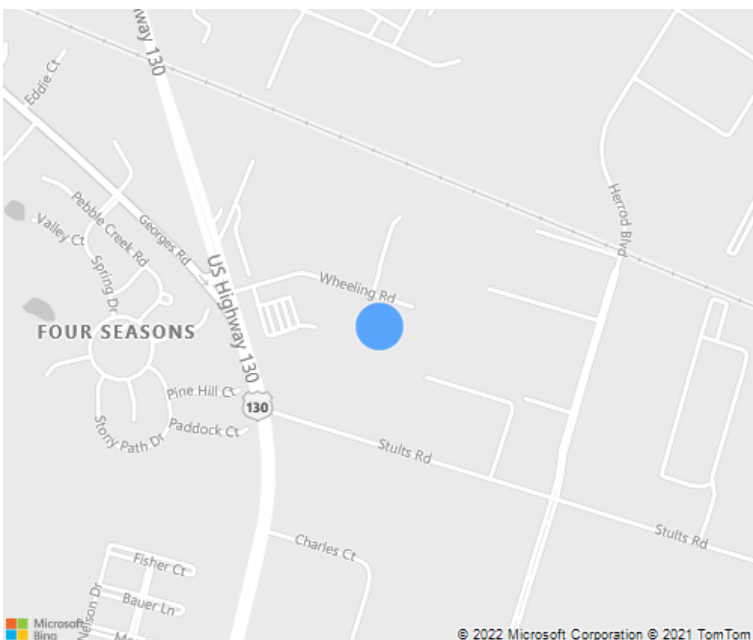
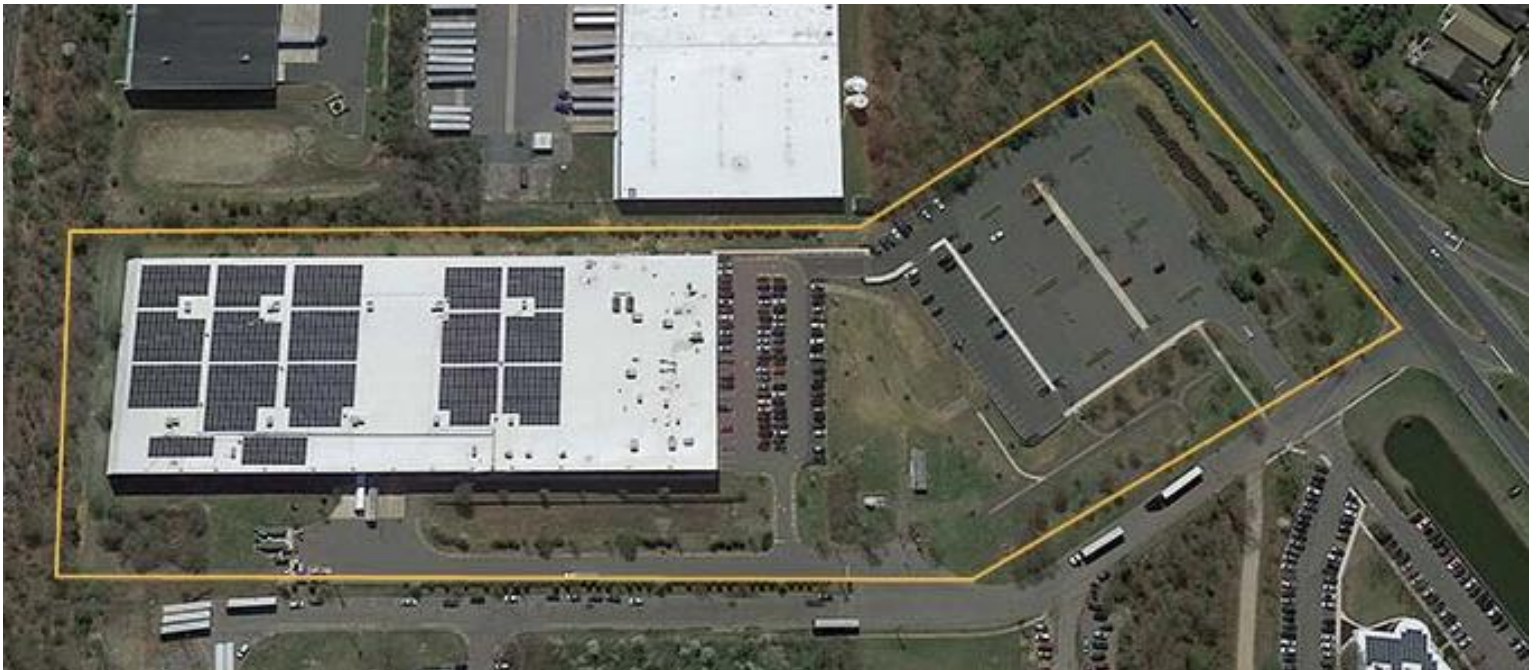


14 Acres

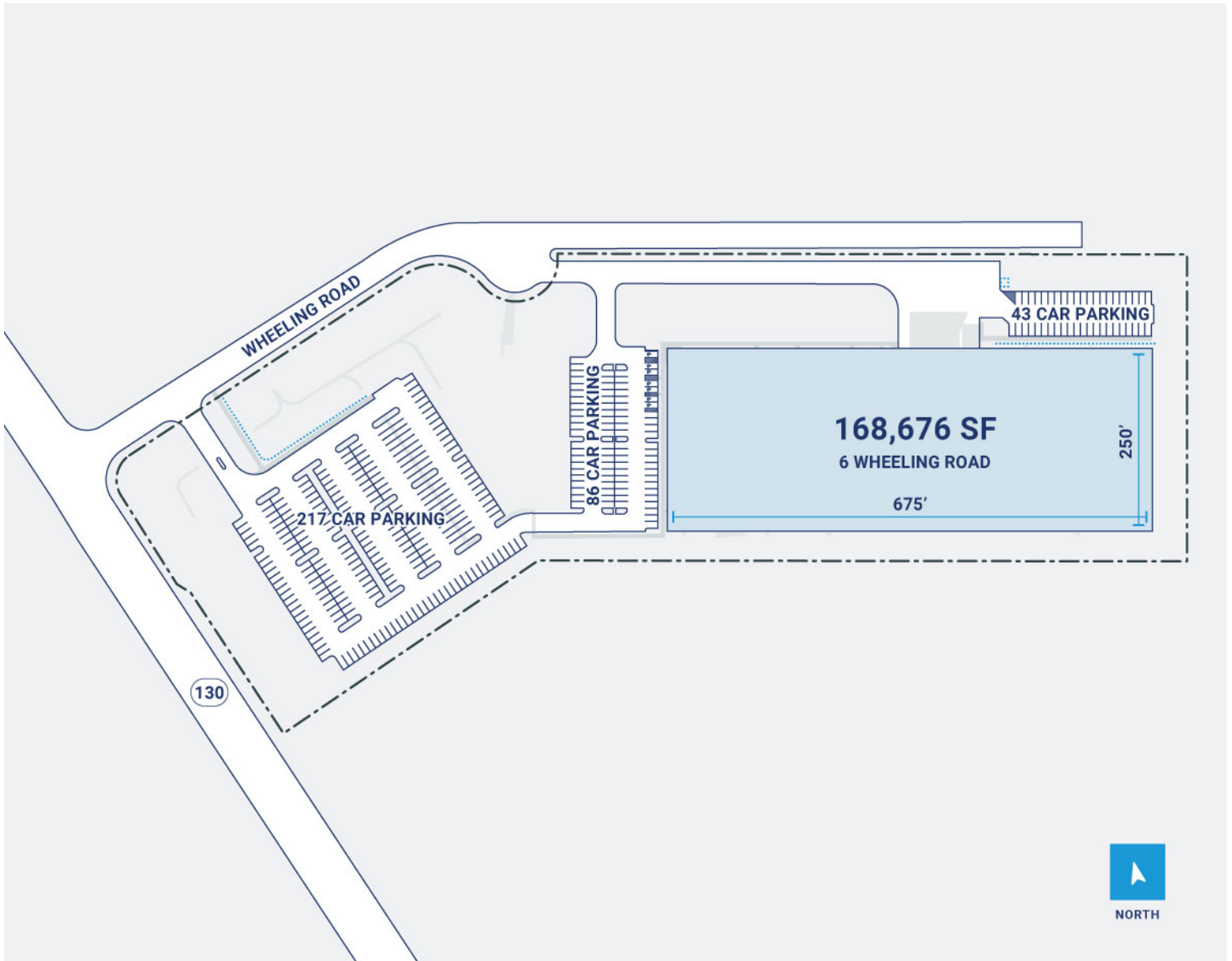


CenterPoint Properties

6 Wheeling Road , Dayton , NJ



NORTH



Property Description

Market: New Jersey/New York	Renovated: 2011	Construction: Concrete tilt-up wall panels
Land: 14 Acres	Car Parking: 342 spaces	Roof: Flat single-ply thermoplastic membrane
Building: 198,676 SF	Trailer Parking: 0 spaces	HVAC: AC, Gas Heat
Office: 0 SF	Clear Height: 30'	Sprinkler: Wet-pipe / Wet ESFR system
Available: SF	Exterior Docks: 4	Power:
Year Built: 2010	Interior Docks: 0	Typical Bay Size: 53' x 49'
Rail Access: No	Drive-In Doors: 1	Available Units: 0