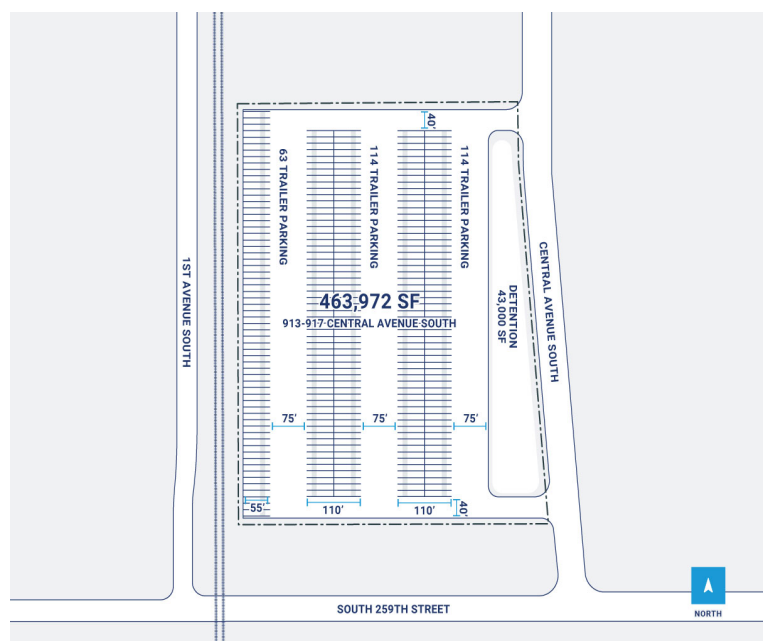
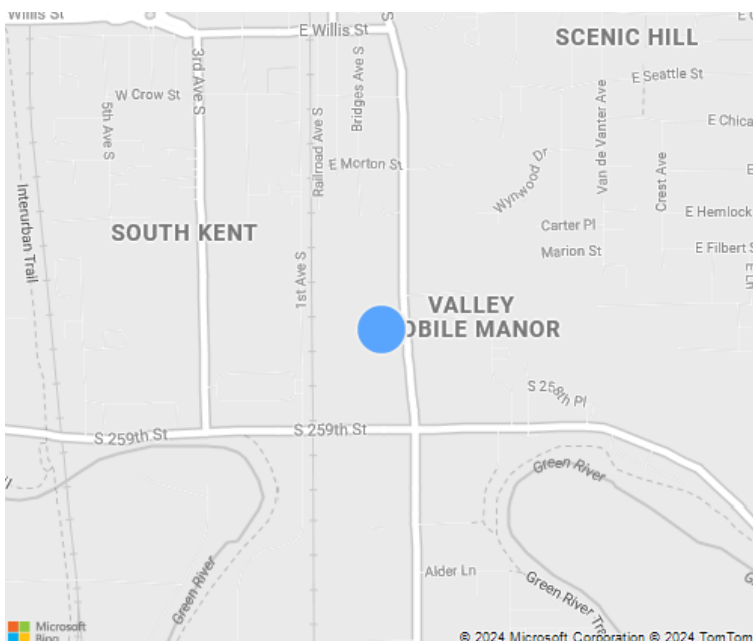


4 Acres

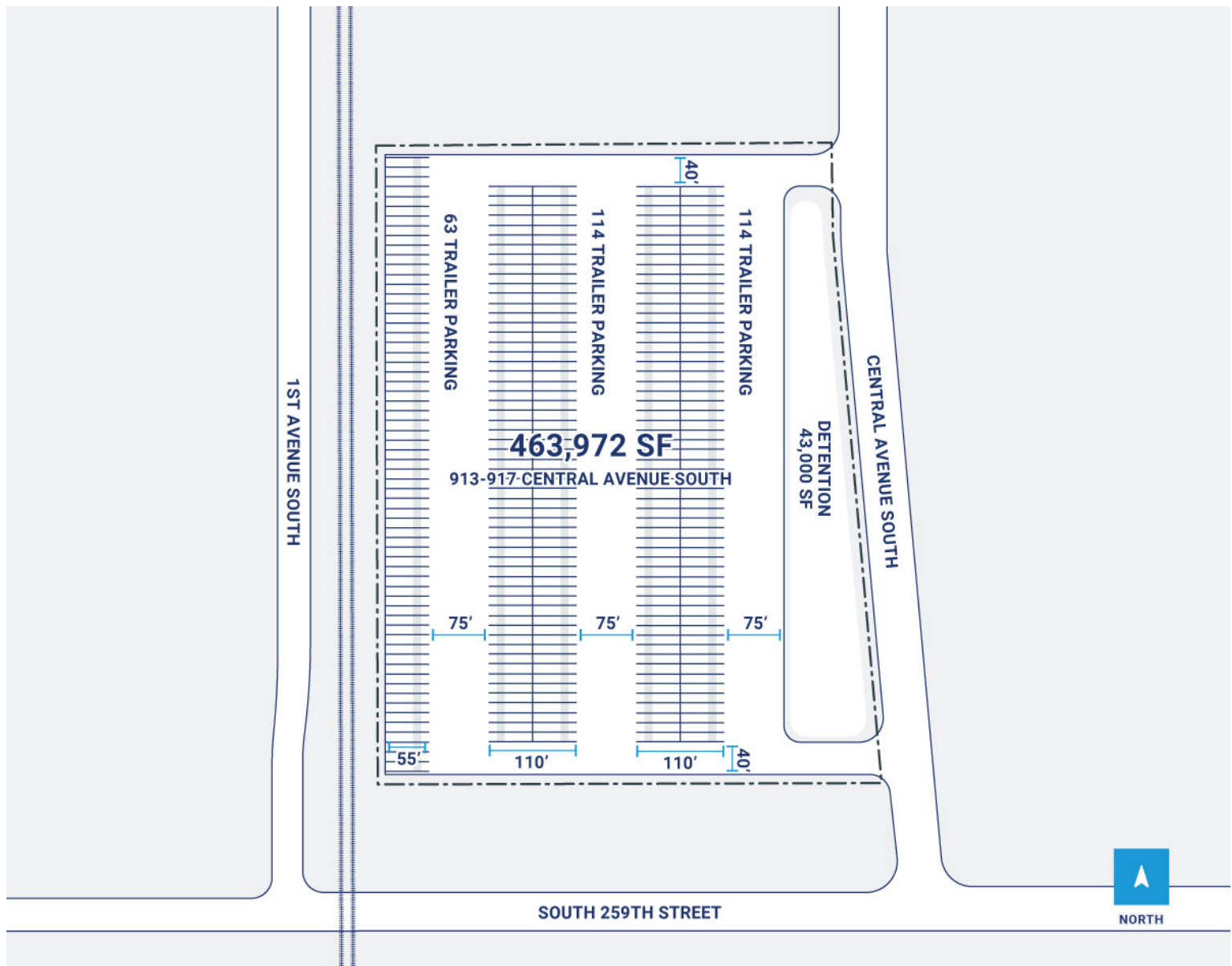


CenterPoint Properties

913 Central Avenue South, Kent, WA



CenterPoint Properties



Property Description

Market: Seattle

Land: 4 Acres

Building: 19,642 SF

Office: 0 SF

Available: SF

Year Built: 1970

Rail Access: No

Renovated:

Car Parking: 63 spaces

Trailer Parking: 9 spaces

Clear Height: 15'

Exterior Docks: 7

Interior Docks: 0

Drive-In Doors: 7

Construction: Shop: concrete/masonry w/ natural stone surface; Office: concrete/masonry

Roof: Low-sloped, single-ply

HVAC: Gas Heat w/ AC

Sprinkler: N/A

Power: 600 amp service; 300 amp main breaker

Typical Bay Size: 10' x 14'

Available Units: 0