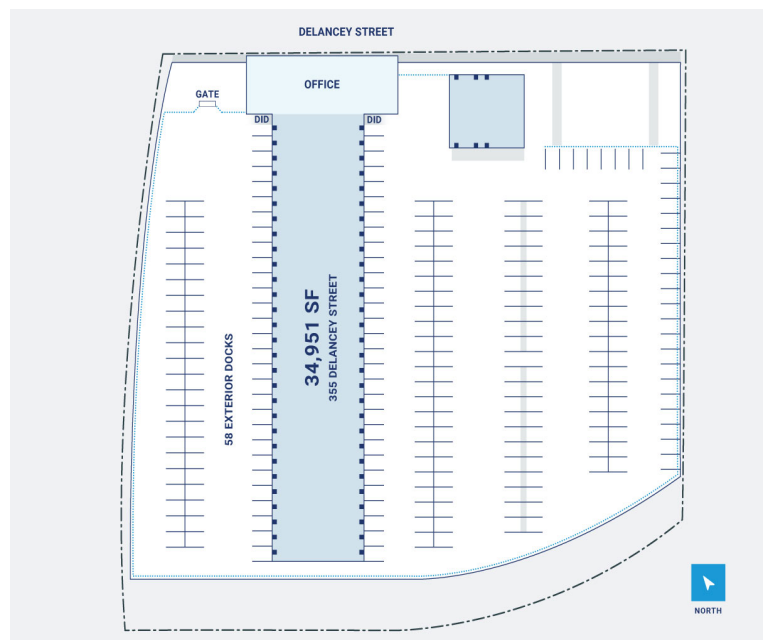
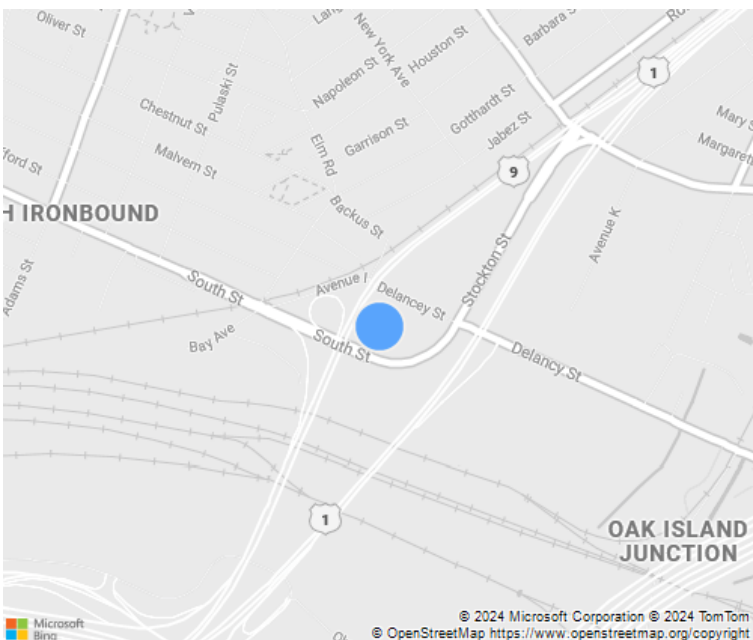
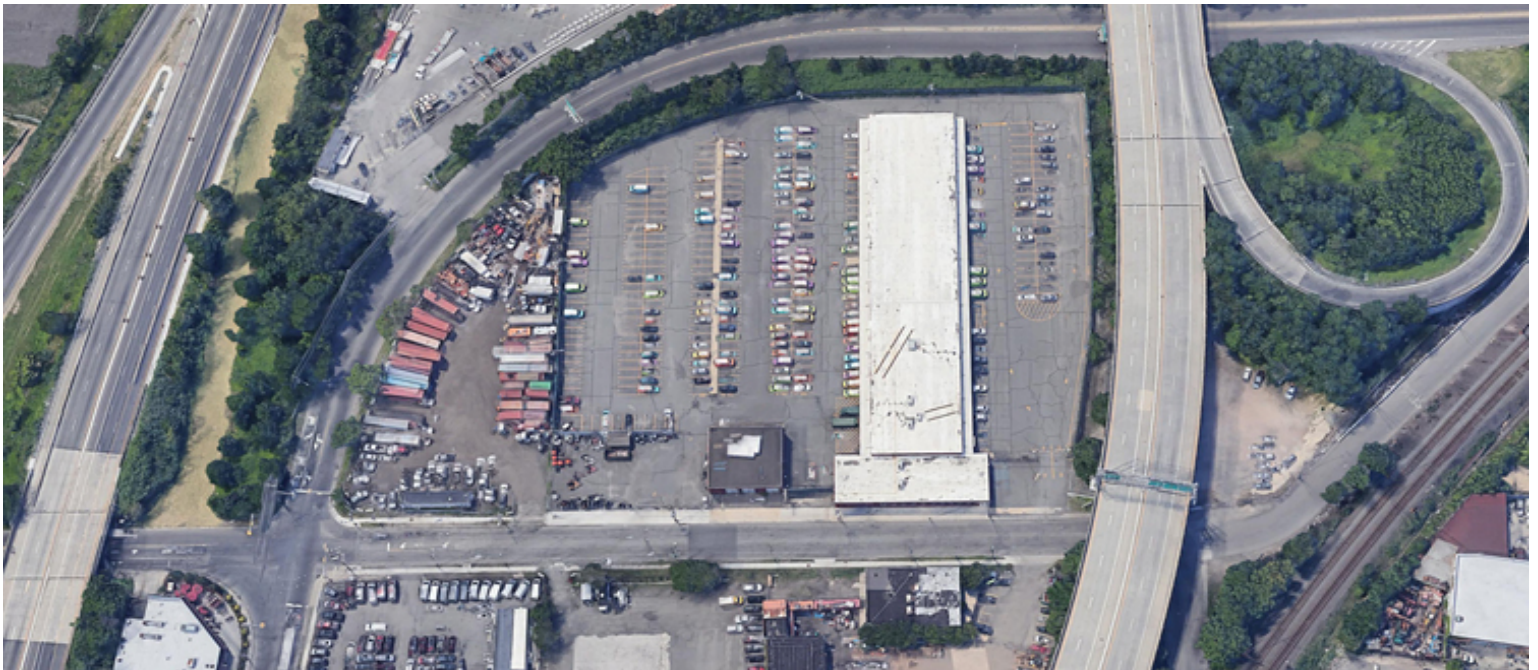


6 Acres

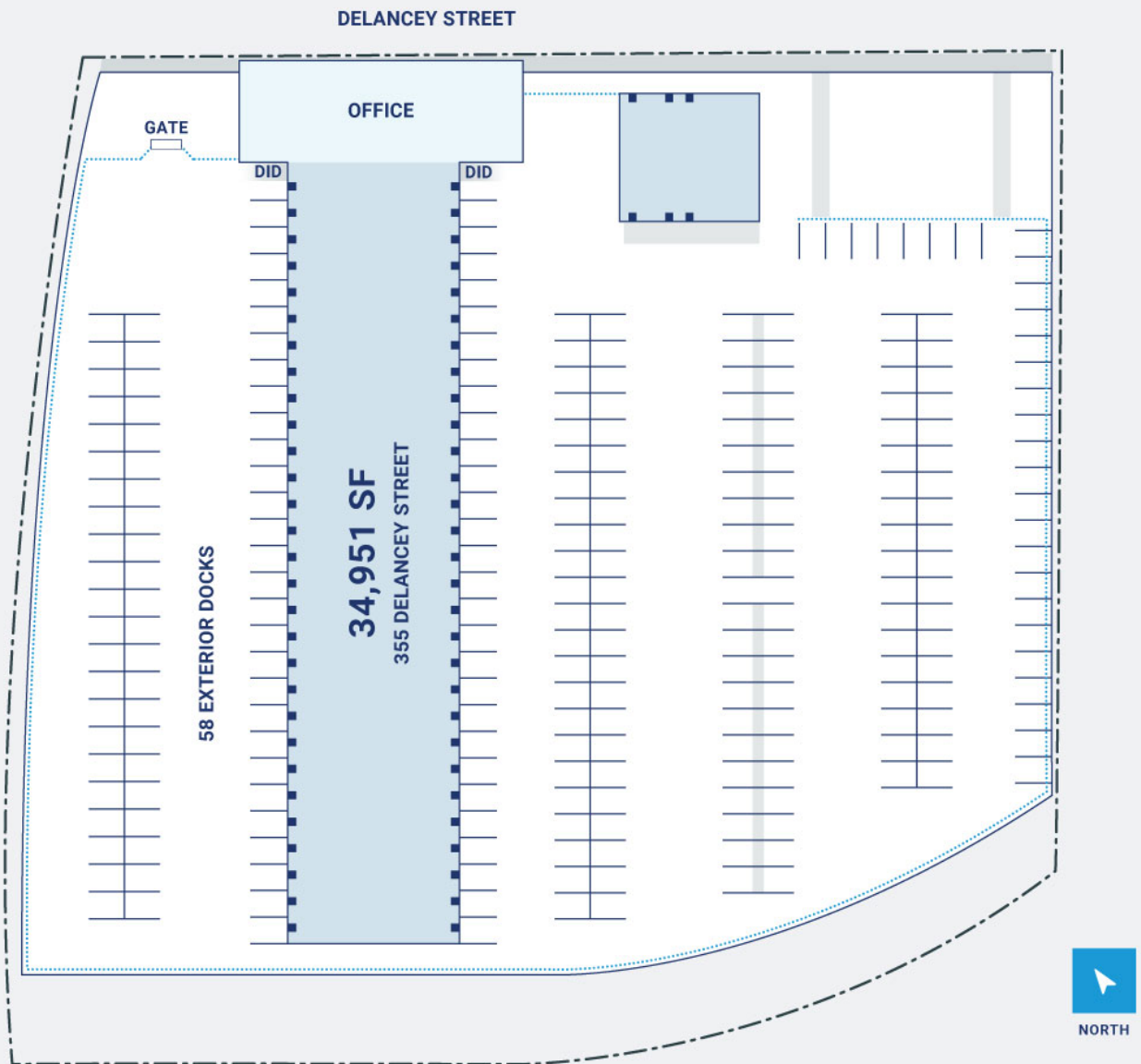


CenterPoint Properties

335 Delancy Street, Newark, NJ



CenterPoint Properties



Property Description

Market: New Jersey/New York	Renovated:	Construction: Steel and masonry
Land: 6 Acres	Car Parking: 28 spaces	Roof: The office and dock roof is a built-up membrane with minerals
Building: 34,951 SF	Trailer Parking: 61 spaces	HVAC: Gas Heat
Office: 0 SF	Clear Height: 16'	Sprinkler: wet and dry
Available: SF	Exterior Docks: 58	Power: breaker indicates 400 amp service. The service voltage could
Year Built: 1960	Interior Docks: 0	Typical Bay Size: 0' x 0'
Rail Access: No	Drive-In Doors: 0	Available Units: 0